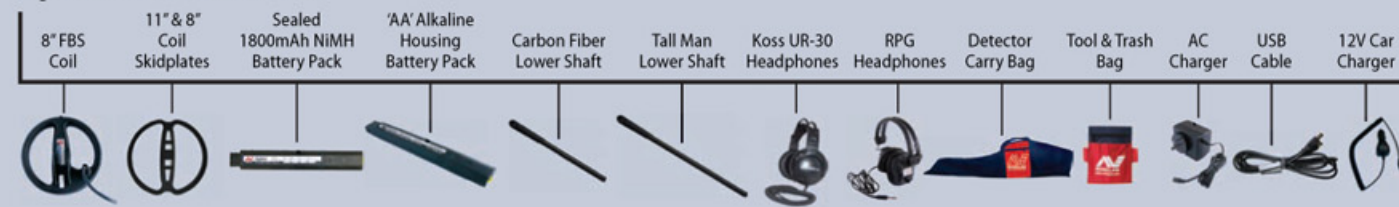


Optional Accessories*



*Standard and Optional accessories listed may vary by region, country and model. Please consult your local authorized Minelab dealer for complete details.

Features

Transmission Technology	Full Band Spectrum (FBS) Technology
Number of Frequencies	28 Simultaneous Frequencies ranging from 1.5kHz - 100 kHz
Microprocessor	32bit, 48MHz microprocessor - fast and powerful
Connectivity	USB connection for communication with personal computer
Software	Intuitive user interface; Fast target processing multi-language functionality
Ground Balance Modes	Auto Ground Compensation - Advanced Digital Filtering
Target Identification	Conductivity range: 1-50 Ferrous content range: 1-35
Audio Tone Identification	1, 2, 4 and Multi-tone; customizable conductivity / ferrous response
Audio Tone Settings	4 Settings: Normal, Long, Smooth, Pitch Hold
Tone ID Variability	30 adjustable steps for better target identification
Discrimination	2 Dimensional Smartfind™ discrimination
QuickMask™	Provides the ability to quickly and easily adjust the level of ferrous and conductive discrimination
Depth Gauge	New larger gauge, updates in pinpoint mode
Sensitivity Adjustment	Fully Automatic; adjustable from aggressive to conservative, Manual Settings 1-30
Sensitivity Gauge	Auto Level, Manual Level and Suggested Level
Noise Cancel	Automatic & Manual
Pinpoint	Modulated audio for improved target size and depth with a new visual aid to zero in on targets
User Modes	4 Minelab Modes and 4 "My Modes"
Low Battery	Audio Alarm
Batteries	1600 mAh NiMH or Alkaline batteries
Coil	Ultra-lightweight 11" Double D (DD) waterproof coil
Visual Display	Large grayscale LCD panel with contrast adjustment and backlight
Headphone Output	¼ inch Stereo Jack
Threshold	Expanded adjustment range from 1-50
Recovery Speed	Selectable (Fast and/or Deep)
Ground Setting	2 settings, Neutral for most ground conditions, Difficult for more mineralized soils
Trash Density	Low or High (Selectable based on site conditions)

Your Local Dealer is:



Minelab Americas
2777 Finley Rd., Unit #4
Downers Grove, IL 60515
email: info@minelabamericas.com
Tel: 1-888-949-6522
www.minelab.com

E-TRAC



The world's first detector with PC interface



E-TRAC



Minelab's most technologically advanced detector and the first with a USB interface.

E-TRAC's sleek, sturdy design, innovative control panel, intuitive menus, clear LCD, robust lightweight coil and comprehensive targeting options set it apart from any other detector available today.

Minelab has taken a further step by incorporating a USB interface that allows you to download and upload settings, user modes and discrimination patterns from your personal computer.

The E-TRAC will locate valuable metal objects in a variety of mineralized ground conditions including; alkaline soils, wet salt beach sand and highly magnetic areas.



E-TRAC Technology

E-TRAC delivers Full Band Spectrum (FBS) with simultaneous frequencies ranging from 1.5kHz – 100kHz through its powerful microprocessor.

E-TRAC's advanced signal processing can rate detected objects according to their ferrous and conductivity characteristics and analyze more information than ever before.

Identification is both accurate and precise.

Minelab's Smartfind™ is a unique two-dimensional scale of discrimination. Smartfind™ graphically represents both ferrous and conductivity properties on the same display.

E-TRAC's target Discrimination ability eliminates signals from undesired targets and accepts signals from good targets.

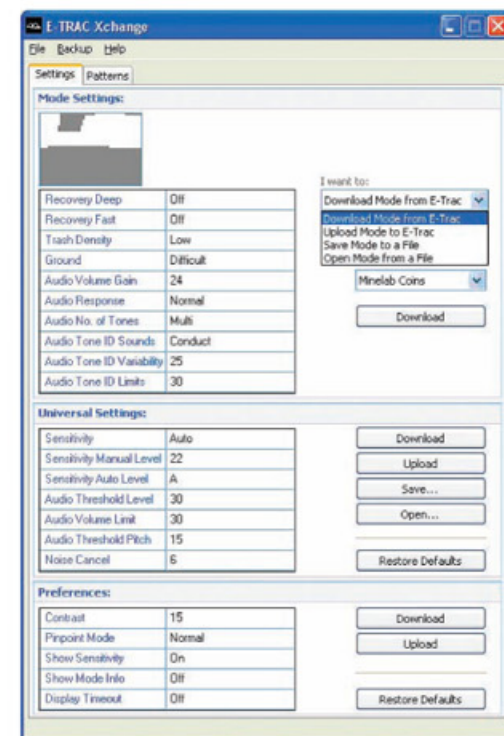
E-TRAC's advanced technology means:

- Greater detecting depth
- High sensitivity over a wide range of targets
- Less interference from electromagnetic sources
- More accurate identification of target characteristics

E-TRAC Xchange

E-TRAC Xchange permits downloading and uploading of detector settings and discrimination patterns via a USB cable to your PC.

Experiences and settings can be shared with other detectorists. The installation CD and Xchange user guide supplied with E-TRAC ensures that you can start building a library of preferred settings right away. Best of all, there is no limit to the number of patterns you can store on a personal computer. Never worry about losing those successful settings again!



LCD Screen

Large LCD with high-resolution grayscale graphics and backlight for clear viewing in all light conditions.

USB Port

Connection to Xchange on your personal computer allows saving your preferred settings to share with others.

Fe-Co Numbers

The Ferrous (Fe) and Conductive (Co) properties of a detected target are shown.

Sensitivity Gauge

The left hand bar shows either automatic or manual level with the numeric sensitivity value above the gauge. The right bar is 'suggested' sensitivity.

Smartfind™ Window

Two dimensional scale of discrimination on the same display simultaneously.

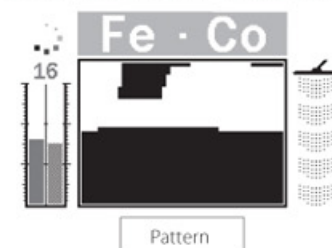
Navigation Buttons

Used for adjusting settings in detect screens and navigating the menu.

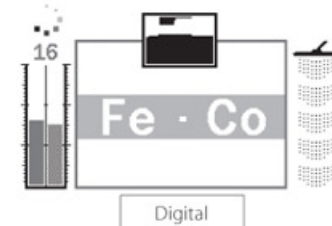
Menu

Access to user modes, discrimination patterns and settings, allowing quick and simple adjustments.

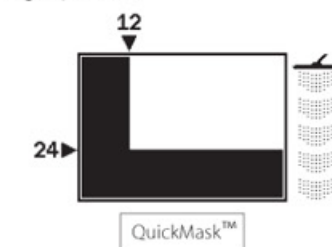
Detection Screens



Target information is presented via the Smartfind™ discrimination pattern, sensitivity gauge, Fe-Co numbers and depth gauge.



Large Fe and Co numbers shows the target position.



QuickMask™ incorporates two slider controls to independently adjust the level of ferrous and conductivity discrimination.



Mode Information Icons

Indicates the mode selected by the user.

Depth Gauge

Represents the approximate depth of a target. The range is 0" to greater than 12".

QuickMask™

Allows the user to adjust the ferrous and conductivity rejection levels independent of the current discrimination pattern and toggle between the two.

Noise Cancel

Minimizes interference in the current environment.

Accept/Reject

Accept or reject any target and modify the discrimination pattern to accept or reject similar targets.

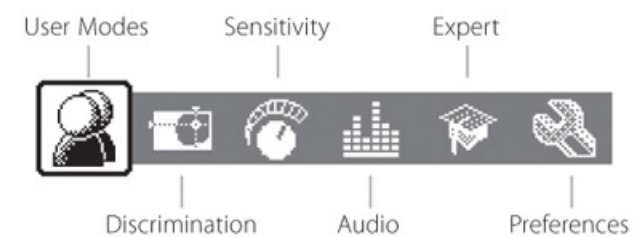
Detect

Used to switch between the pattern screen and the digital screen.

Pinpoint

Assists in locating the exact position of a detected target. Two pinpoint modes; Normal and Sizing.

Easy to Use Menu



Menu Features:

- A selection of preset user modes (Coins, High Trash, Beach, Relics) and space to save personalized user modes.
- A discrimination menu to select, save, edit and combine discrimination patterns.
- Auto and Manual sensitivity selection plus suggested sensitivity relative to ground conditions.
- An audio settings menu to vary the types and volume levels emitted by the detector.
- A specialized menu of advanced settings and functions including; recovery; trash density; ground setting and noise cancel.
- A preferences menu that changes what information is provided on E-TRAC's detection screens.



"Performance in the field is what counts and the E-TRAC meets this challenge with flying colors. My testing at a number of sites deemed 'hunted-out' or 'trash-filled' by other detectorists produced a wide assortment of keepers including silver coins, Civil War relics and other artifacts from above-average depths and in many cases, surrounded by rusted ferrous items or other trash. Improved stability & target identification, finer adjustment control of individual settings and markedly better balance makes the E-TRAC a detector you can use all day with great results!"

Andy Sabisch, USA Field Tester